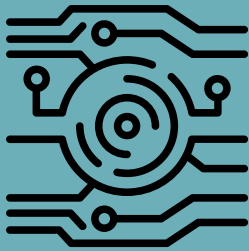




SECURE IDENTITY
SOLUTIONS, INC.

AI
SOLUTIONS

SITEMINDER HEALTH CHECK



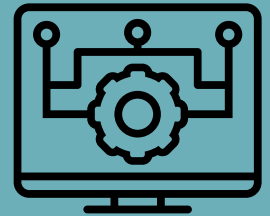
Phase 1 Review

- Architecture
- Core Components
- Dependencies
- Logs
- Documentation



Phase 2 Analysis

- High Availability
- Best Practices
- Requirements
- Procedures



Phase 3 Findings

- Observations
- Recommendations
- Next Steps

SiteMinder Components

- Core Health Check Includes: One Environment, Policy Server, Policy Store, Key Store, Session Store, and User Stores
- Optional Add-Ons: Additional Environments, SAML, OIDC, OAuth, Cloud Integrations