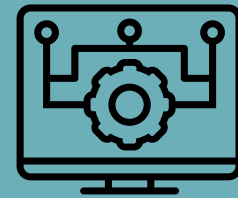


TEST DATA MANAGER (TDM) HEALTH CHECK



Phase 1 Assessment

- Installation & Environments
 - Check Install of TDM Components and Environment
 - Review Structure of the Working Database (Repository)
- Administration & Usage
 - Assess User and Use Case Data



Phase 2 Recommendation

- Review Best Practices:
 - Profiles, Environments, Data Models and Data Relationships
 - Discovering Test Data (Profiling)
 - Creating Subset Data for Testing
 - Masking Data for Testing
 - Generating Synthetic Data to Fill In Test Data Coverage Gaps
- Deliver Recommendations Docs

TDM Components

- Core Health Check Includes: Test Data Manager (TDM)
- Add-On: Agile Requirements Designer (ARD)