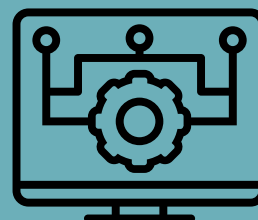


SERVICE VIRTUALIZATION (SV) HEALTH CHECK



Phase 1 Assessment

- Installation & Environments
 - Check Install of DevTest Components including Identity & Access Manager, Enterprise Dashboard Server, Registries, DevTest Portal, Broker, Coordinator Server and More
- Administration & Usage
 - Review Application Tests and Results



Phase 2 Recommendation

- Verify & Review Best Practices:
 - Tests and Test Suites
 - Models (VSM)
 - Images (SVI)
 - Recordings (Recorder)
- Discuss Training and Mentoring
- Deliver Recommendation Documentation
- Discuss Go-Forward Plan

Service Virtualization Components

Core Health Check Includes:

Service Virtualization (SV) + Third-Party Plugins, Databases, and EJB