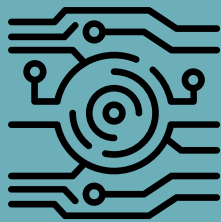


LAYER7 API GATEWAY HEALTH CHECK



Session 1

Architecture Overview

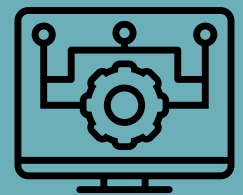
- Application flows
- Setup & configuration checks
- Gateway internal & external clusters DC1 & DC2
- Gateway OAuth configuration
- OAuth database configuration
- Cluster wide properties
- ...and more



Session 2

API Services & Authorization

- Services on the gateway
- REST & SOAP services
- Policy assertions being used
- Global policies
- Policy fragments
- Threat management
- Service availability
- ...and more



Session 3

API Portal

- API portal configuration
- API portal authorization configuration
- API portal flows
- API portal documentation
- API portal hub page
- API portal organizations
- API portal authentication
- ...and more

Optional Add-Ons

- Gateway with OTK
- Gateway, OTK & Portal
- Gateway, OTK & MAG
- Gateway, OTK, MAG & Portal