

# DX NETOPS HEALTH CHECK



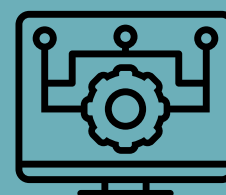
## Phase 1 Assessment

- Review Requirements
- Review Architecture
- Review Environments (versions, integrations, etc.)
- Review Configuration
- Review Issues



## Phase 2 Recommendation

- Share Best Practices
- Discuss Training
- Discuss Mentoring
- Deliver Recommendation Documentation
- Discuss Go-Forward Plan



## Phase 3 Implementation

- Architectural Changes
- Upgrades
- New Functionality
- Existing Functionality
- Potential Integrations

## DX NetOps Components

Core Health Check Includes 1 Product: Spectrum, Network Flow Analysis, Performance Manager, Mediation Manager or Virtual Network Assurance