

# DX APM HEALTH CHECK



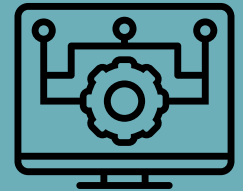
## Phase 1 Assessment

- Review Requirements
- Review Architecture
- Review Environments
- Review Configuration
- Review Issues



## Phase 2 Recommendation

- Share Best Practices
- Discuss Training
- Discuss Mentoring
- Deliver Recommendation Documentation
- Discuss Go-Forward Plan



## Phase 3 Implementation

- Architectural Changes
- Upgrades
- New Functionality
- Existing Functionality
- Potential Integrations

## DX APM Components

- Core Health Check Includes: DX Application Performance Management (APM)
- DX SaaS Add-Ons: App Experience Analytics (AXA) & DX Operational Intelligence (DX OI)